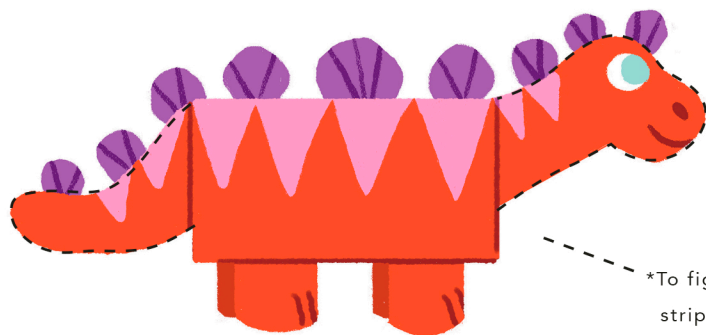


Dinosaur Valentine Box

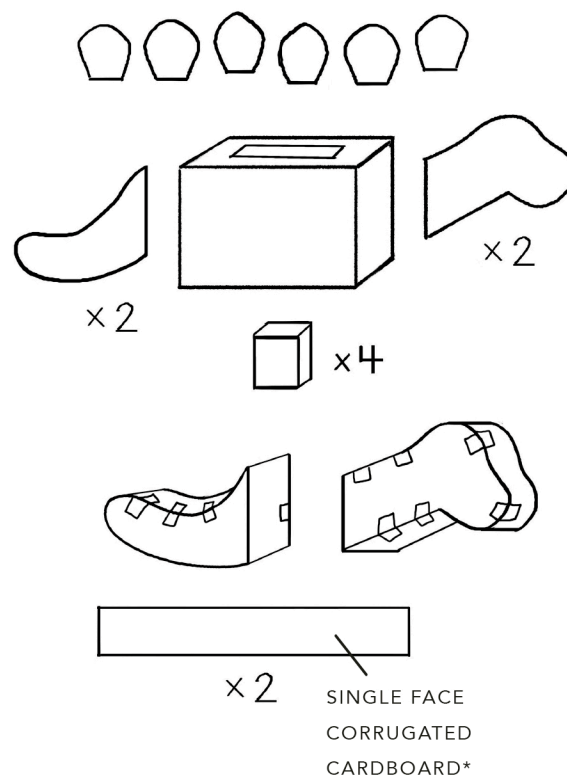
THE PERFECT CARD CARRIER FOR YOUR LITTLE HUG-OSAURUS

SUPPLIES:

- MEDIUM-SIZED BOX (SHOE BOX, TISSUE BOX or SMALL SHIPPING BOX) FOR BODY
- PAPERBOARD (LIKE CEREAL BOXES) or RIGID CARDBOARD
 - 2 head shapes (a little bit shorter body length)
 - 2 tail shapes (a little bit longer than body length)
 - 4 feet (small boxes or coffee cups about half the height of the body)
 - 6ish back plates of various sizes
- SINGLE FACE CORRUGATED CARDBOARD
 - 2 long strips to build the head and tail (about half as wide as the depth of the body, and long enough to wrap around the edge of the head and tail)
- SCRATCH PAPER
- CRAFT KNIFE
- CUTTING MAT
- COLORFUL PAINT, WRAPPING PAPER or TISSUE
- CONSTRUCTION PAPER or CARD STOCK in a VARIETY OF COLORS
- MARKERS
- TAPE
- GLUE STICK or SPRAY MOUNT
- HOT GLUE GUN



PAPERBOARD



APPROXIMATE SIZES:

BODY: 6" x 9"
NECK/HEAD : 4" x 8"
TAIL: 3" x 9"
FEET: 3" x 3"

*To figure out the length of the corrugated cardboard strips, measure around head and tail shapes and add a couple of inches. (Ours were 21" x 3")

STEPS

1. CUT OUT BODY PARTS: Sketch the head, tail, and plates on scratch paper and trace on to paperboard. Cut them out with a craft knife. Cut long strips from the corrugated cardboard to form the sides of the head and tail.

2. BUILD HEAD AND TAIL: Lay the corrugated cardboard strip on the work surface with the wavy side up. About an inch from the end, line up the bottom of the neck. Tape the two together, using the masking tape as a "hinge." Lift up the head to "open" the two pieces, and begin to work the flexible corrugated cardboard around the edge of the head, taping as you go, to form the top and bottom. Once you're all the way around, add the other side of the head and tape it in place. Repeat for the tail.

3. MAKE A MAIL SLOT: Cut a hole large enough for valentines in the top of the box.

4. ADD COLOR: Paint the head, tail, box and feet or cover them with tissue or wrapping paper. Paint or cover the back plates in a contrasting color.

5. ADD A FACE: Make eyes by cutting out two circles on white paper (they don't have to be perfect) and two slightly smaller circles in a color. Glue them on either side of the head—you can play around with placement to change the expression. Draw or paint the nose and smile on each side of the head.

6. DECORATE THE BODY: Use paint, paper and markers to add stripes, spots or other features to the head, tail and body. Paint toes on the feet.

7. PUT IT TOGETHER: Use hot glue to attach the feet first, then the head and tail. Finally, add the back plates, going from small to large to small again as you work from the head to the tail.



HALLMARK
IDEAS + INSPIRATION

© 2023 Hallmark Licensing, LLC. All rights reserved.
For personal use only. Not for commercial use.
ideas.hallmark.com